

ROSEHILL SCHOOL NEWSLETTER



Ko te ahurei o te tamaiti arahia
to tatou mahi

*Let the uniqueness of the child
guide our work*

Kia ora, Talofa, Malo e lelei, Namaste, Nihāo, Xin chao, As-sallamu 'alaikum, Sat Sri Akaal, Mabuhay!

Welcome to our first newsletter for 2023 and a special welcome to our new students and staff.

After a stormy start, our staff and students are energised and excited about the opportunities this school year brings. Together we can all strive for excellent progress for our ākonga and enjoy meaningful and enriching experiences.

This year there is a focus on promoting "active learning" across the curriculum, developing toileting skills, teaching literacy, and following routines to a high standard.

It is my privilege to be the Principal of this amazing school community, and I am confident that by working together, we can all make this an amazing and successful year.

~ Gill

REMINDERS

- **Thurs 6 April**
 - Last day of term 1
- **Monday 24 April Staff Only Day**
 - Taxis cancelled for this day.
 - The MOE has given all schools two teacher only days to learn about the new curriculum. This is the first of these days.

EVENTS

- **Wed 8 Feb** - PLP Whānau evening
- **Mon 20 March** - Pōwhiri for new students



MEET OUR ENRICHMENT TEAM



*EHARA TAKU TOA
I TE TOA TAKITAHU
HE TOA TAKITINI*

*My strength is
not as an
individual but as
a collective*

Mere Huriwai
Kaiārahi i te Reo

*Kia ora
ko Mere toku ingoa
he uri au no Ngati Porou me Ngai
tuhoe me Nga Puhi hoki
Tena koutou tena koutou katoa*



Sergio Dantas de Souza
Dance Therapist

*Ola. Kia ora. My name is
Sergio Dantas. I've been very
interested to explore the
benefits of movement,
mindfulness practices and
creative expression to apply
them into my practice as a
teacher and dance therapist.*

*Te Whare Tapa Wha alongside other Hauora
models and concepts of art therapy have helped
to design a programme to support students'
wellbeing, positive self-image and deep sense of
belonging.*

MEET OUR ENRICHMENT TEAM



Lynnette Denton
Music Therapist

I have been mainstream teaching for many years and I am delighted to be part of Rosehill School.

As part of the enrichment team I have the pleasure of presenting music to your children in a fun and interactive way. We sing, play percussion instruments, Bucket drums, Boomwhackers, move to current music, investigate rhythms, and using different genres look at where we experience music in our everyday lives.

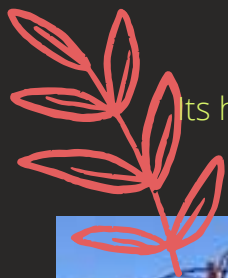


Nicola McMeikan
Drama Therapist

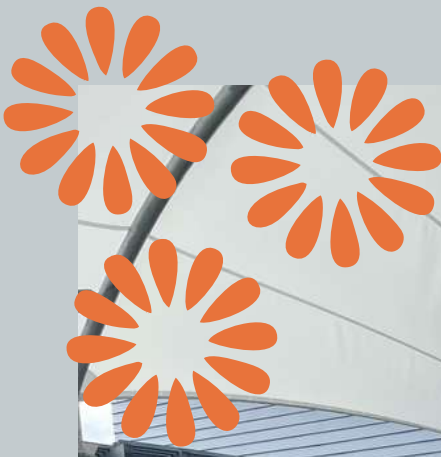


Te Matauranga 6 Rosehill School Satellite Class

Its healthy active learning this year and the students are doing an amazing job in participating enthusiastically in all the learning activities.

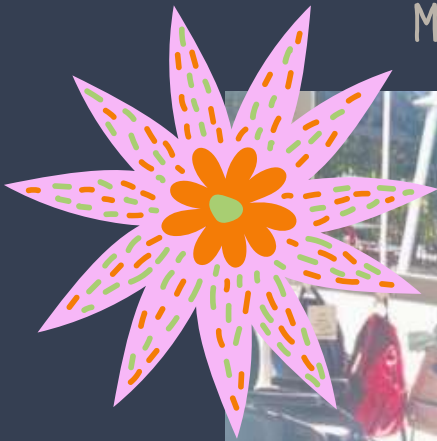


Jump Jam



All the classes in Tuhono block participate in jump jam with Bobby!

Multi-sensory writing



A key component of pre-writing skills are the pre-writing shapes. This is the ability to achieve up and down movements, side to side movements, circular motions etc etc.

Rosehill Base Room 6 have been working on this in the context of multi-sensory writing. We have a Powerpoint that instructs the students which way to move their body. The PowerPoint also offers music for each instruction.



We have found this activity to be very engaging and fun for all learners. It also helps develop motor planning and hand eye coordination.



As you can see in the photos, we did it with paint... But you could use shaving foam, paintbrush and water or anything else that offers sensory input really!

WHANAU SUPPORT SERVICES

disability connect. helping families

HOME INFORMATION, EVENTS & SUPPORT WHO WE ARE CONTACT US DONATE

Information, Events & Support

There are lots of ways we can help individuals with a disability, or family members of a disabled person, to navigate the New Zealand disability sector. Check out our seminars, community conversations and additional services to the right. Information on events, resources and useful links to activities below.

Quick Links

Seminars & Support Groups

- Chinese Disability Support Group - currently on hold
- Parents' Social Group - view in person at Otahuhu
- Parents' Support Group - view in person at Otahuhu
- Zoom Parents Support Group - Mondays 7-8pm
- Other Organisations and Support Groups

Subscribe to our newsletter

<https://disabilityconnect.org.nz/information/>

Behaviour Support Specialists

Our network of over 170 behaviour specialists are dedicated to working with parents, whānau, caregivers and residential care providers to improve wellbeing and quality of life for all, wherever you live in New Zealand. Our Disability and Autism services are funded by the Ministry of Health.

For parents, caregivers and support workers we provide practical and flexible support to help you develop skills and strategies to manage any situation. If you're currently receiving disability supports you will already be registered with a Needs Assessment Service Coordination (NASC) service. You can talk with your Needs Assessment Service Coordinator about seeking specialist behaviour support from Explore. [Find out more about your local NASC here](#)

If you are not eligible for funded specialist behaviour support services have a chat with one of our Specialist Services Managers to find out about our fee for service options.

<https://www.healthcarenz.co.nz/service/explore-specialist-advice/>

taikura trust

What we do Who we support What to expect Send a referral Stories COVID Info hub Contact us

What we do

Our work is called needs assessment and service coordination. It's all about you and/or your whānau telling us how your everyday life is affected by your disability and how we can support you to make life more meaningful. We cover the greater Auckland region—from Mercer to Wellsford and all our services are FREE.

Needs assessment

- This is when we meet you. We'll ask you to share what a day in your life looks like, what's working and what can be better.
- You get to tell us how your disability impacts your everyday life and what a meaningful life looks like to you.
- The information you provide will help us think about the available Ministry of Health funded supports that can help you meet your goals or complete everyday tasks easier.
- Apply online to find out if you can receive a needs assessment from us. Your family, doctor, a social worker or a teacher can also request a needs assessment on your behalf.

<https://www.taikura.org.nz/what-we-do/>

AUTISM NZ Every step together

Support from us Navigating Autism Education Tools About us News

Support from us

The Autism New Zealand Outreach Service is available across the country with Outreach Coordinators offering a range of support services from our 16 branches nationwide. The Outreach Service provides support, information, and education on autism. This includes linking you to the right support services in your local region. The Outreach Service is free and available for autistic people, parents/family/whānau, and their support networks – including educators and professionals. If you need support, please get in touch with your local branch.

<https://autismnz.org.nz/support-from-us/>

ccs disability action including all people

Home COVID-19 About us Services Donate Mobility Parking Lifemark Become a foster carer Holiday homes News, views & events

CCS Disability Action's vision is to see every disabled person included in the life of their family and community. As well as providing direct support and advocacy, we have a wider role in shaping society's attitudes towards people with a disability. CCS Disability Action is the largest pan-disability support and advocacy organisation in New Zealand.

Our Vision Te Puāwaitanga

We have been working with disabled people and their families since 1935 and are now at the forefront of service provision, advocacy and information sharing in the disability sector New Zealand-wide. Our people are professional, innovative, dedicated and knowledgeable. We hold ourselves to the highest possible ethical and professional standards and are known for our partnership approach to support.

We partner with disabled people, their families and whānau to enable them to have choice and control in their lives. We also work with communities, family members, friends, Hapu, Iwi, educators, health providers, social services, businesses, employers, councils, Government, community agencies, community groups and the public to identify and remove barriers that prevent people from achieving their goals.

Resources

- Strategic Priorities 2019-2022 (PDF 1.3 MB)
- Strategic Priorities Easy Read (PDF 2.8 MB)
- Strategic Priorities 2019-2022 brochure Word variation (110 KB)
- Disability Leadership Framework 2019-2022 (DOC 149 KB)
- Māori Disability Framework (DOC 576 KB)
- Māori Disability Framework - Easy Read (4 KB)
- 1.7 Child and Young Person Protection WORD version (61 KB)
- 1.7 Child and Young Person Protection PDF (PDF 211 KB)

<https://www.ccsdisabilityaction.org.nz/about-us/>

ihc GROUP

The IHC Group of Charities encompasses three wholly-owned subsidiaries with contract funding and community programmes funded by donations.

ihc IN YOUR COMMUNITY

IHC advocates for the rights, inclusion and welfare of all people with intellectual disabilities. It supports them to live satisfying lives in the community. IHC provides advocacy, volunteering, events, membership associations and fundraising. [Find out more about IHC.](#)

idea services

IDEAServices is New Zealand's largest provider of services for people with intellectual disabilities. IDEAServices supports adults of all ages with intellectual disabilities to live independently and be part of their local communities. This includes residential care, supported living and vocational support. [Find out more about IDEAServices.](#)

choices nz

Choices NZ helps people with all disabilities and health-related conditions achieve their goals. This is achieved through flexible support relationships and access to community services. [Find out more about Choices NZ.](#)

Accessible Properties

Accessible Properties is a social and disability housing provider. It is committed to providing housing that meets tenants' needs and tenancy services that support long-term, successful inclusive living in a community. [Find out more about Accessible Properties.](#)

<https://www.idea.org.nz/about/the-ihc-group>

Contact us: 48-52 Rosehill Drive, Papakura. P: 09 298 4569 F: 09 281 5289
E: office@rosehill.school.nz | www.rosehill.school.nz | [f @rosehill.school.nz](https://www.facebook.com/rosehill.school.nz)